



**EMETALS**  
— LIMITED —

# TARGETING WORLD CLASS GOLD DEPOSITS IN UGANDA

**ASX: EMT**

INVESTOR PRESENTATION  
SEPTEMBER 2024





# Disclaimer

This presentation has been prepared by E-Metals Limited ("Company"). It does not purport to contain all the information that a prospective investor may require in connection with any potential investment in the Company. You should not treat the contents of this presentation, or any information provided in connection with it, as financial advice, financial product advice or advice relating to legal, taxation or investment matters.

No representation or warranty (whether express or implied) is made by the Company or any of its officers, advisers, agents or employees as to the accuracy, completeness or reasonableness of the information, statements, opinions or matters (express or implied) arising out of, contained in or derived from this presentation or provided in connection with it, or any omission from this presentation, nor as to the attainability of any estimates, forecasts or projections set out in this presentation.

This presentation is provided expressly on the basis that you will carry out your own independent inquiries into the matters contained in the presentation and make your own independent decisions about the affairs, financial position or prospects of the Company. The Company reserves the right to update, amend or supplement the information at any time in its absolute discretion (without incurring any obligation to do so). Neither the Company, nor its related bodies corporate, officers, their advisers, agents and employees accept any responsibility or liability to you or to any other person or entity arising out of this presentation including pursuant to the general law (whether for negligence, under statute or otherwise), or under the Australian Securities and Investments Commission Act 2001, Corporations Act 2001, Competition and Consumer Act 2010 or any corresponding provision of any Australian state or territory legislation (or the law of any similar legislation in any other jurisdiction), or similar provision under any applicable law. Any such responsibility or liability is, to the maximum extent permitted by law, expressly disclaimed and excluded.

Nothing in this material should be construed as either an offer to sell or a solicitation of an offer to buy or sell securities. It does not include all available information and should not be used in isolation as a basis to invest in the Company.

## **Future matters**

This presentation contains reference to certain intentions, expectations, future plans, strategy and prospects of the Company. Those intentions, expectations, future plans, strategy and prospects may or may not be achieved. They are based on certain assumptions, which may not be met or on which views may differ and may be affected by known and unknown risks. The performance and operations of the Company may be influenced by a number of factors, many of which are outside the control of the Company. No representation or warranty, express or implied, is made by the Company, or any of its directors, officers, employees, advisers or agents that any intentions, expectations or plans will be achieved either totally or partially or that any particular rate of return will be achieved.

Given the risks and uncertainties that may cause the Company's actual future results, performance or achievements to be materially different from those expected, planned or intended, recipients should not place undue reliance on these intentions, expectations, future plans, strategy and prospects. The Company does not warrant or represent that the actual results, performance or achievements will be as expected, planned or intended.

## **Competent Person's Statement**

The information in this presentation that relates to Exploration Results has previously been announced by the Company on 26 July 2024 (Acquisition of Mubende Gold Project, Uganda) and 13 September 2024 (Exploration Update - Mubende Gold Project, Uganda) (Announcements). For the purposes of ASX Listing Rule 5.23, the Company confirms that it is not aware of any new information or data that materially affects the information included in the Announcements.



# Investment Highlights

## Gold Exploration in Uganda - A New Frontier

### First mover advantage in a highly prospective territory

Granted exploration license EL00379 covers 202 square kilometres in the Mubende region west of Kampala and includes the highly prospective Bukuya prospect.

Option over an additional 4 exploration license applications.

### Significant gold potential, no modern exploration

Uganda's aerial exploration surveys have shown it hosts largely unexplored gold deposits<sup>1</sup>.

The Bukuya prospect is currently being mined by 60-80 artisanal workers over 600 metres of prospective strike and remains open along strike and at depth.

### Experienced board & in-country management team

Experienced board in the successful management of mineral companies through exploration, mine development & production.

In-country technical team appointed including Mr Dylan le Roux and Mr Allan Agumya to manage local exploration activities.

### Politically stable region, keen to attract investment & to develop the gold sector

Ugandan Government has introduced new mining legislation and regulations to encourage investment and best practices.



# Corporate Overview

## The Mubende Gold Project in Uganda

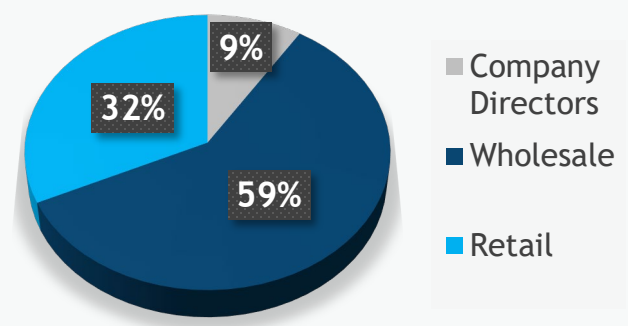
### Capital Structure



### Shareholder breakdown

#### TOP 10 SHAREHOLDERS - 50.5%

1	CITICORP NOMINEES PTY LIMITED
2	TIRUMI PTY LTD
3	GREAT SOUTHERN FLOUR MILLS PTY LTD
4	ZERO NOMINEES PTY LTD
5	GWR GROUP LIMITED
6	MR ROGER BLAKE & MRS ERICA LYNETTE BLAKE
7	MR PAUL GREGORY BROWN & MRS JESSICA ORIWIA BROWN
8	TURNQUEST INVESTMENTS LIMITED
9	SYRACUSE CAPITAL PTY LTD
10	MONEX BOOM SECURITIES (HK) LTD





# Board & Management



**GARY LYONS**  
CHAIRMAN

Mr Lyons is a successful and well respected Perth based businessman; being a shareholder and the managing director of the Heiniger Groups Australasian operations for the last 20 years.



**TECK SIONG WONG**  
DIRECTOR

Mr Wong has considerable international business experience in mining and manufacturing, having worked in Hong Kong, the United Kingdom and now in Malaysia and Indonesia after graduating with a Bachelor of Business degree from Swinburne University (Melbourne).



**MATHEW WALKER**  
DIRECTOR

Mr Walker is a businessman and entrepreneur with over 30 years experience in the management of public and private companies, corporate governance and providing corporate advice. He has served as executive Chairman or Managing Director for public companies with operations in North America, South America, Africa, Eastern Europe, Australia and Asia.



**DYLAN LE ROUX**  
IN-COUNTRY MANAGEMENT TEAM

Mr Dylan le Roux is a South African geologist with ~10 years' experience operating in Africa with a focus on East Africa and Uganda. He has managed and executed several early-stage exploration programmes and has experience in various commodities including gold, tin, lithium, and copper.



**ALLAN AGUMYA**  
IN-COUNTRY MANAGEMENT TEAM

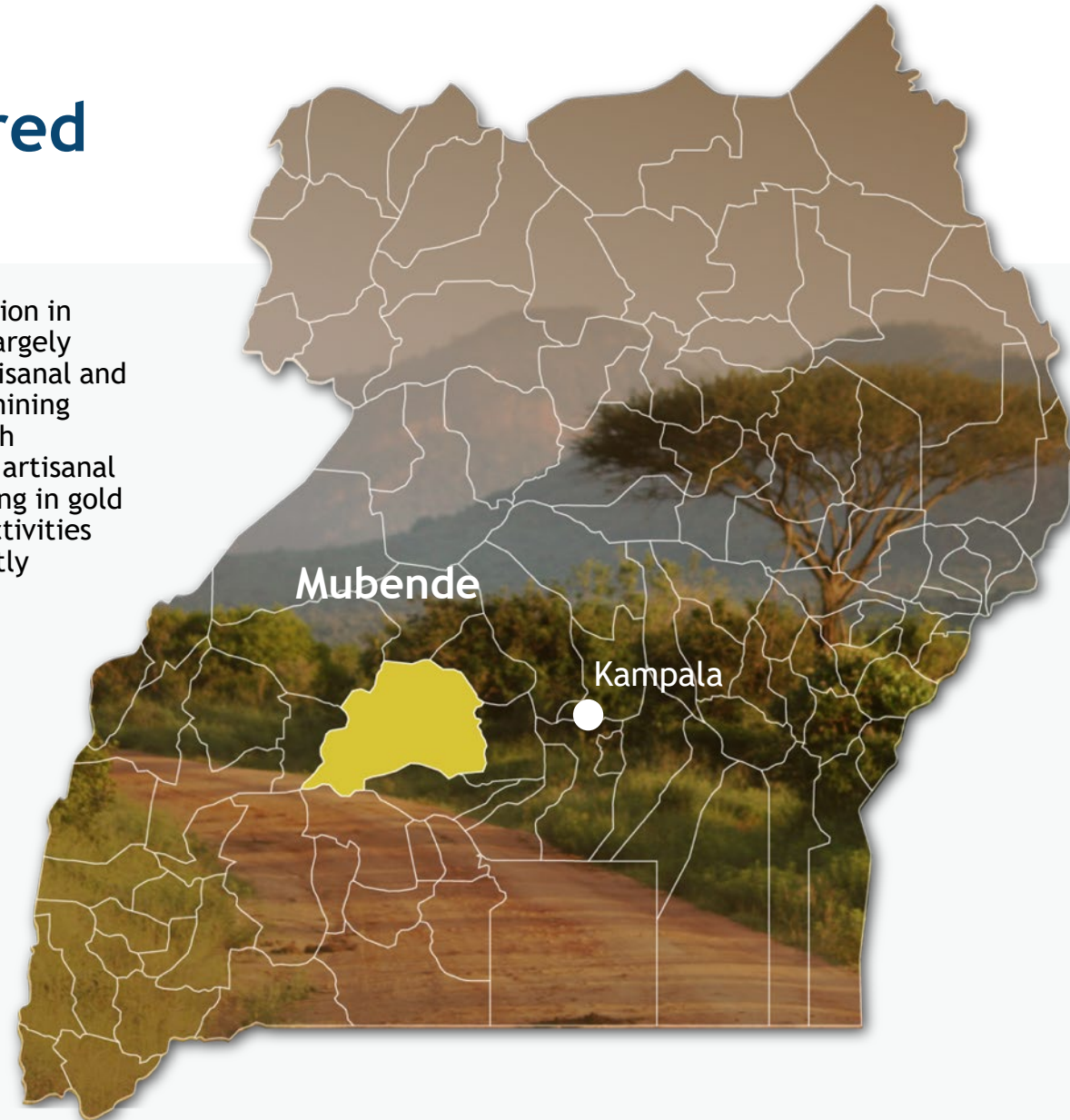
Mr Allan Agumya is a local Ugandan businessman who has been involved in the mining industry for over 13 years and has a broad contact base within the Uganda business and regulatory community. He currently serves as the Chairman of the Miner's Forum Uganda.



# Uganda

## Mineral rich country with vast deposits of gold, largely unexplored with modern mining practices

- The Uganda Government is focused on attracting investment and improving regulatory frameworks to encourage sustainable mining practices.
- The government has passed the *Mining and Minerals Act, 2022* and enacted the *Mining and Minerals Regulations 2023*.
- In 2022 the Ugandan government announced the discovery by aerial survey substantial gold deposits spread across several regions including Buhweju, Mubende, Namayingo, Karamoja, and Zombo districts<sup>1</sup>.
- There are several major gold mines, such as Busia and Mubende in Uganda<sup>2</sup>.
- Gold production in Mubende is largely driven by artisanal and small-scale mining activities with thousands of artisanal miners working in gold extraction activities that are mostly unregulated.



<sup>1</sup> <https://www.mining-technology.com/features/uganda-gold-deposit-investment/?cf-view>;  
<https://www.kfm.co.ug/news/energy-ministry-identifies-new-gold-deposits.html>  
<sup>2</sup> <https://www.buygoldbarsafrica.com/uganda-gold-mines/>



# Project Location

## Mubende Gold Project



The Mubende Gold Project is comprised of a single exploration license EL00379 with an area of 202 km<sup>2</sup>.



Located in the Mubende region west of the provincial capital, Kampala.



The Mubende project is readily accessible via dirt roads.



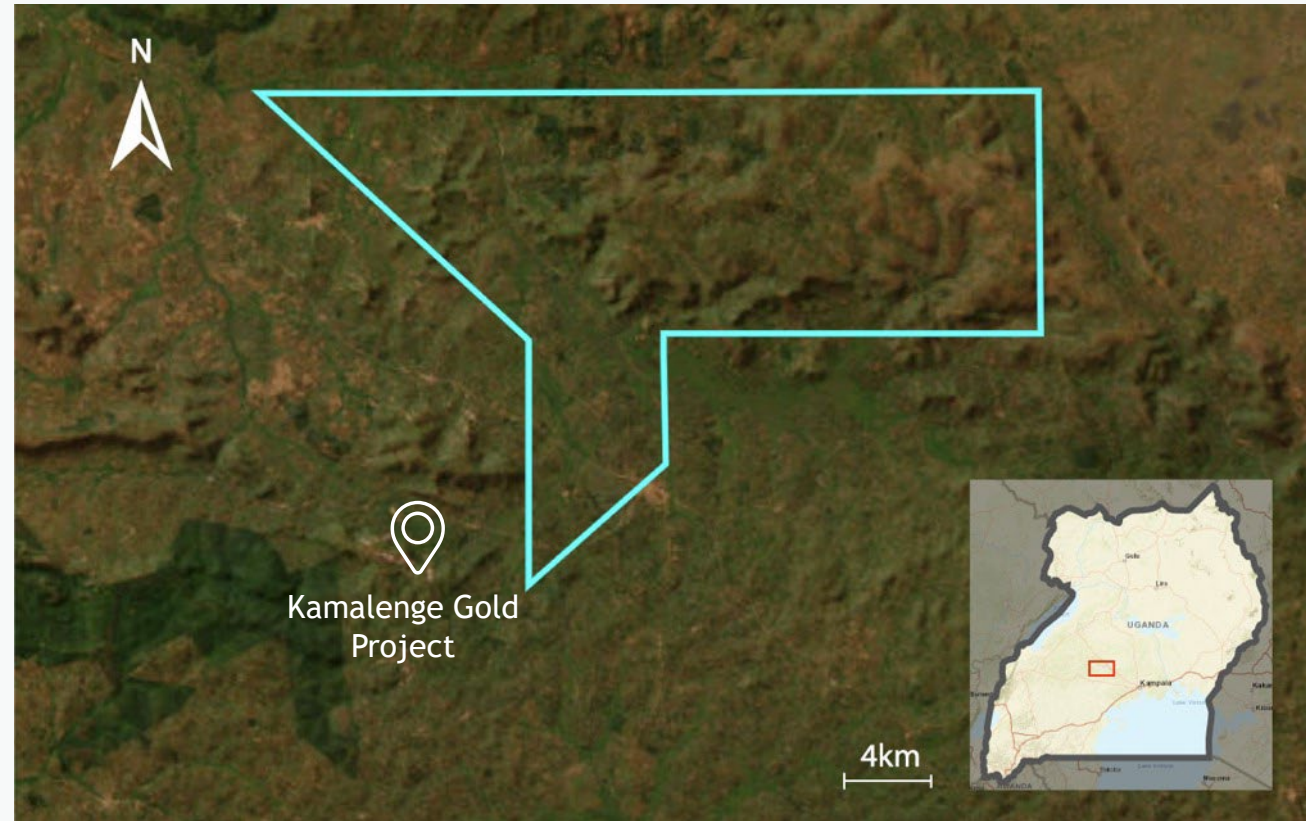
The region is stable & no security is required for general exploration activities.



Several hotels available in nearby villages 30min drive from the site.



Located 5.5km north-west of the Kamalenge Gold Project which reported several significant drilling results.



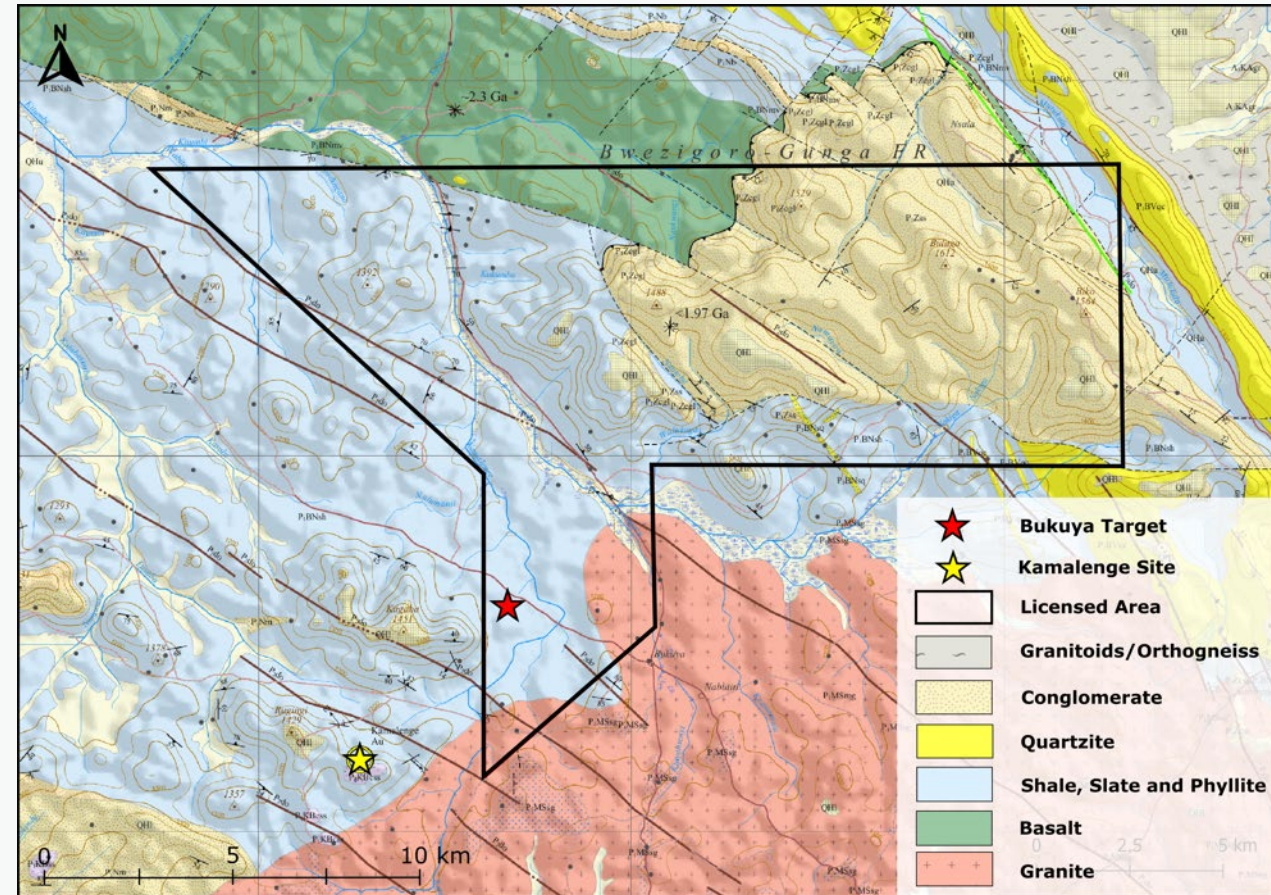
*Tenement map for EL00379*



# Geology

## Mubende Gold Project

- The tenement is underlain by a series of variably deformed metasediments such as shales, phyllites, slates & quartzites which have been intruded by late-stage granites.
- Mineralization appears confined to a deformation zone within the metapelites & hosts three subsets of veins exploited by artisanal workers. The first subset includes quartz veins with hematite mineralization, iron-oxide staining, and goethite/limonite-filled vugs, seen in southern shafts with NW trending foliation. The second subset comprises metallic veins of blueish-grey & black ferro-manganese mineralisation with botryoidal textures & specular hematite, found in northern shafts with EW trending foliation. The third set comprises massive milky white quartz veins.
- Initial observations suggest the veining & artisanal workings are confined to a deformation zone roughly 40m wide. This deformation zone has sub-zones with variable degrees of shearing and veining. Sample results will determine thickness of the mineralised zone.



Geological map of EL00379





# Rock Types

## Mubende Gold Project

Two types of metasedimentary rocks were observed on the Bukuya prospect which may be broadly grouped into coarser and a finer grained units.

### Meta-wacke:

The coarser-grained metasedimentary is light grey in colour & the most prominent of the two units. Interpreted as a metamorphosed wacke, it consists of sand-sized grains within a matrix where micas have started forming & shows varying degrees of foliation development from very weak to well-developed.

### Phyllitic slate:

This finer grained unit is typically dark-grey to black in colour and has a strong slaty cleavage. Some samples also show a phyllitic luster indicating the transformation of clay minerals into micas. The slates that formed the wall-rock of larger veins typically showed strong chloritization, with veins typically being foliation parallel, subvertical & NW trending.



*Varying degrees of foliation development within the meta-wacke and the veining associated with this rock type:*

- a) Meta-wacke has a blocky appearance; hence the stringers are interpreted as joint fills rather than foliation concordant.*
- b) Folded and deformed decimetre scale veins within the massive meta-wacke.*
- c) Meta-wacke with strong foliation development.*
- d) Meta-wacke with intermediate foliation development.*
- e) Meta-wacke with no foliation development.*



# Rock Types

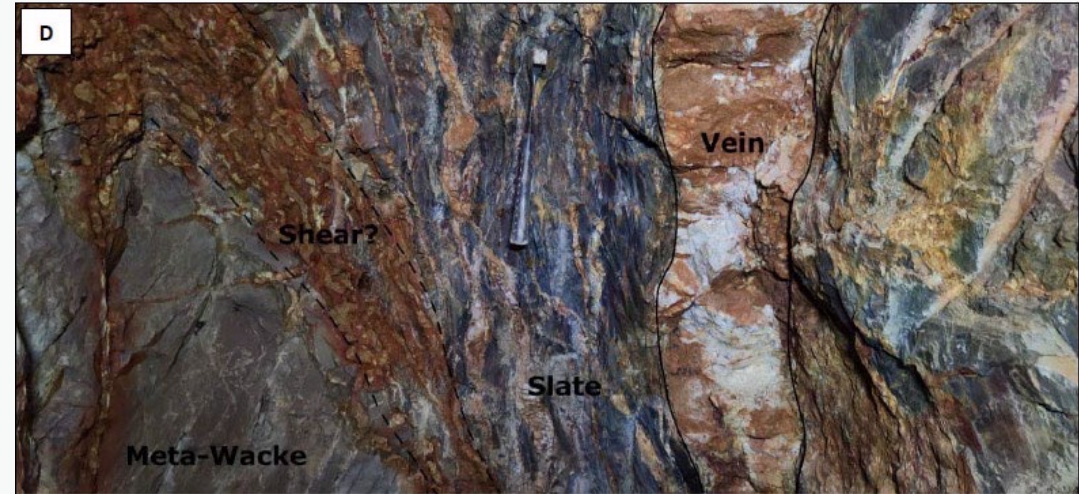
## Mubende Gold Project



a) hand sample of fresh slate.  
c) hand sample of slate containing mm-scale foliation concordant stringers



b) The contact between a m-scale vein (right) and the slate host rock (left)



d) Image depicts all the major rock types and structures observed at site. Right to left: A decimetre-scale vein in contact with a slate that has several cm-scale foliation concordant quartz stringers. An iron-stained contact is observed between the dark grey to black slate and lighter grey meta-wacke and is interpreted as a shear zone. The meta-wacke has stringers present, however in much lesser quantity and varying orientation due to the lack of a well-developed foliation to exploit.



# Mineralisation

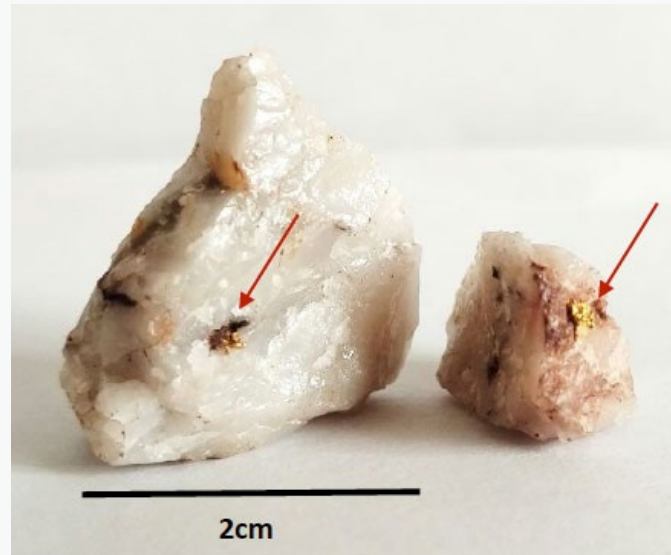
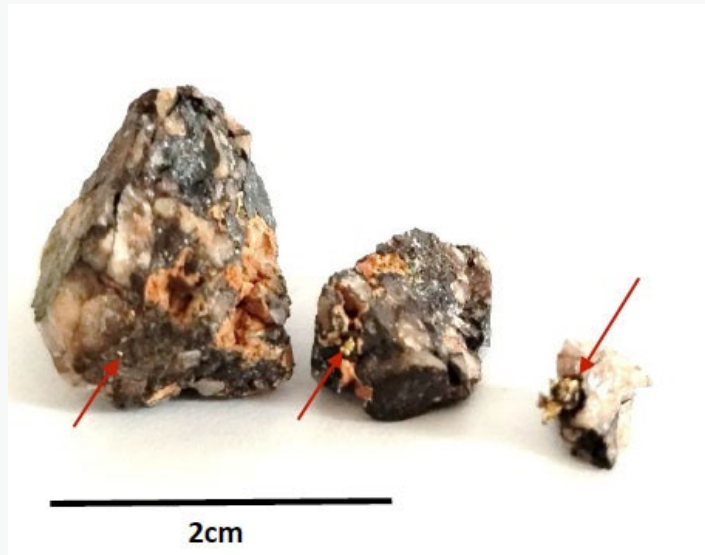
## Visible gold in ferro-manganese & pure quartz veins

Gold mineralisation at Bukuya is hosted by quartz and ferro-manganese veins that appear to have preferentially intruded along the foliation planes of the phyllite-slate host rock.

The phyllite-slate host rock is sandwiched between thicker sequences of more massive greywacke & it is interpreted that the competence contrast between the rocks results in increased deformation, shearing, and subsequent fluid flow & veining within it.

Several vein styles & phases occur on the site & range in thickness from millimetre-scale to over 2 meters.

The mineralised zone as evidenced by the artisanal workings extends for ~600m along strike & there are no visible indications of it pinching out. Thickness of the zone is yet to be determined but appears to be confined to a 40m wide zone of subvertically foliated metasediments which undulate from NW to EW trending along strike.



*Visible gold in type 2 veins (left) and type 3 veins (right)*

*Type 1 iron-rich quartz veins*



# Mineralisation

## Visible gold in ferro-manganese & pure quartz veins



Type 2 ferro-manganese veins



Type 3 massive white quartz veins.

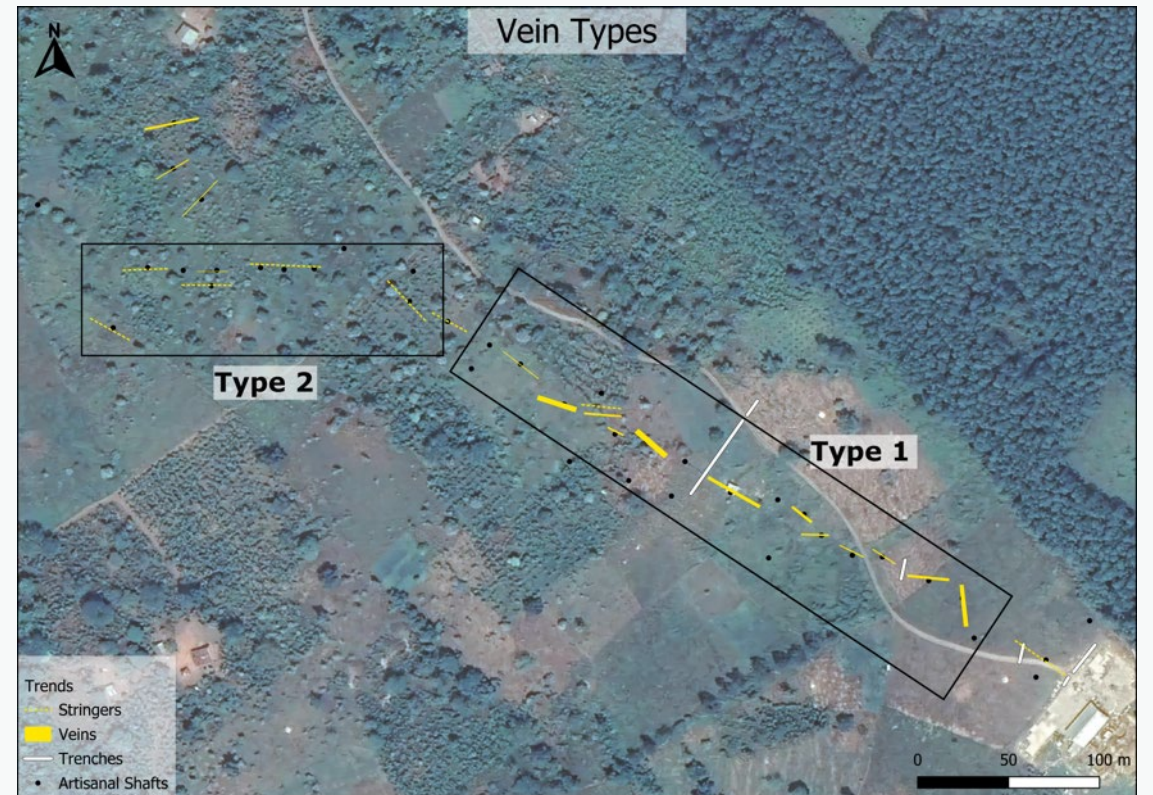
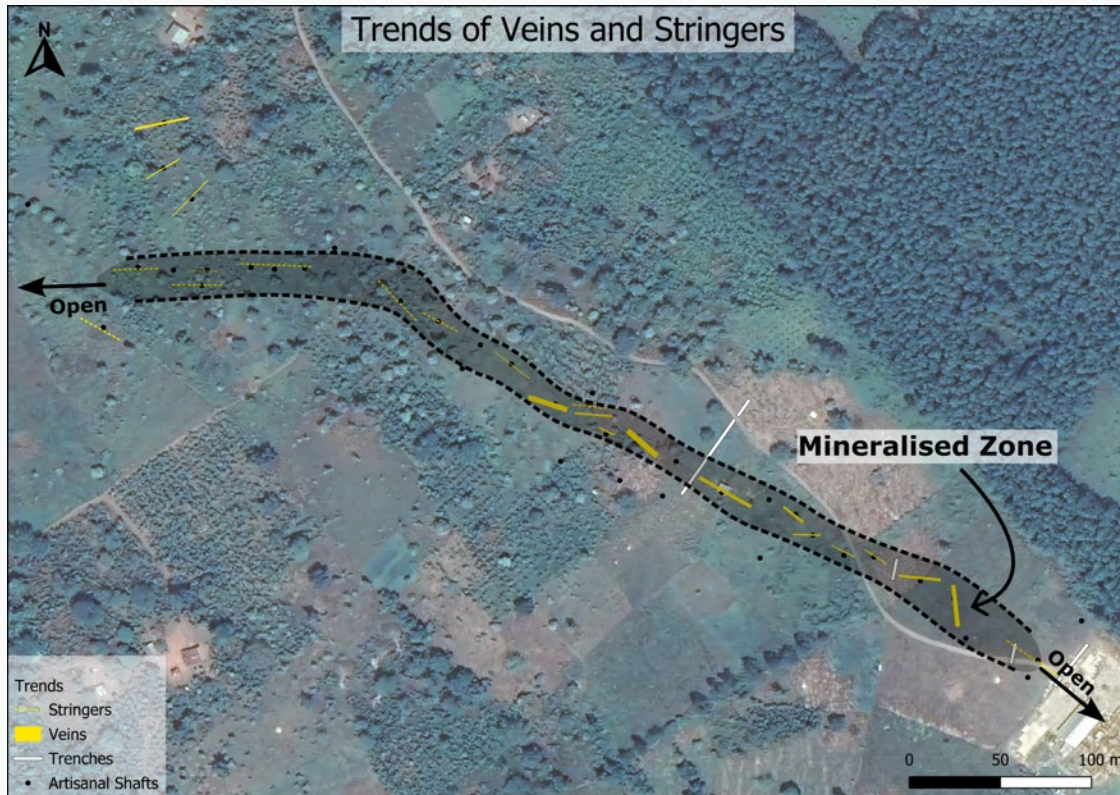
a) Massive, competent milky white quartz vein (left) in contact with a sheared and chloritized metasediments on the right. The altered wall rock also contains a type 1 vein (note increased amount of ferruginous alteration and fracturing).

(B) Hand specimens of a type 3 vein (sample Z1009).



# Mapping

## Artisanal works mapped to determine trend & host mineralisation



*The mineralised zone is a silicified zone where the wall rocks are foliated and show varying degrees of deformation. Veins within this zone are typically foliation concordant. The thickness of the veins depicted in the map is to scale (stringers show orientation but not thickness or quantity), however the strike length is exaggerated for the purpose of visualising the trends better.*

*Map indicating the main styles of quartz veining observed at various locations within the Bukuya site.*



# Soil & Rock Chip Sampling

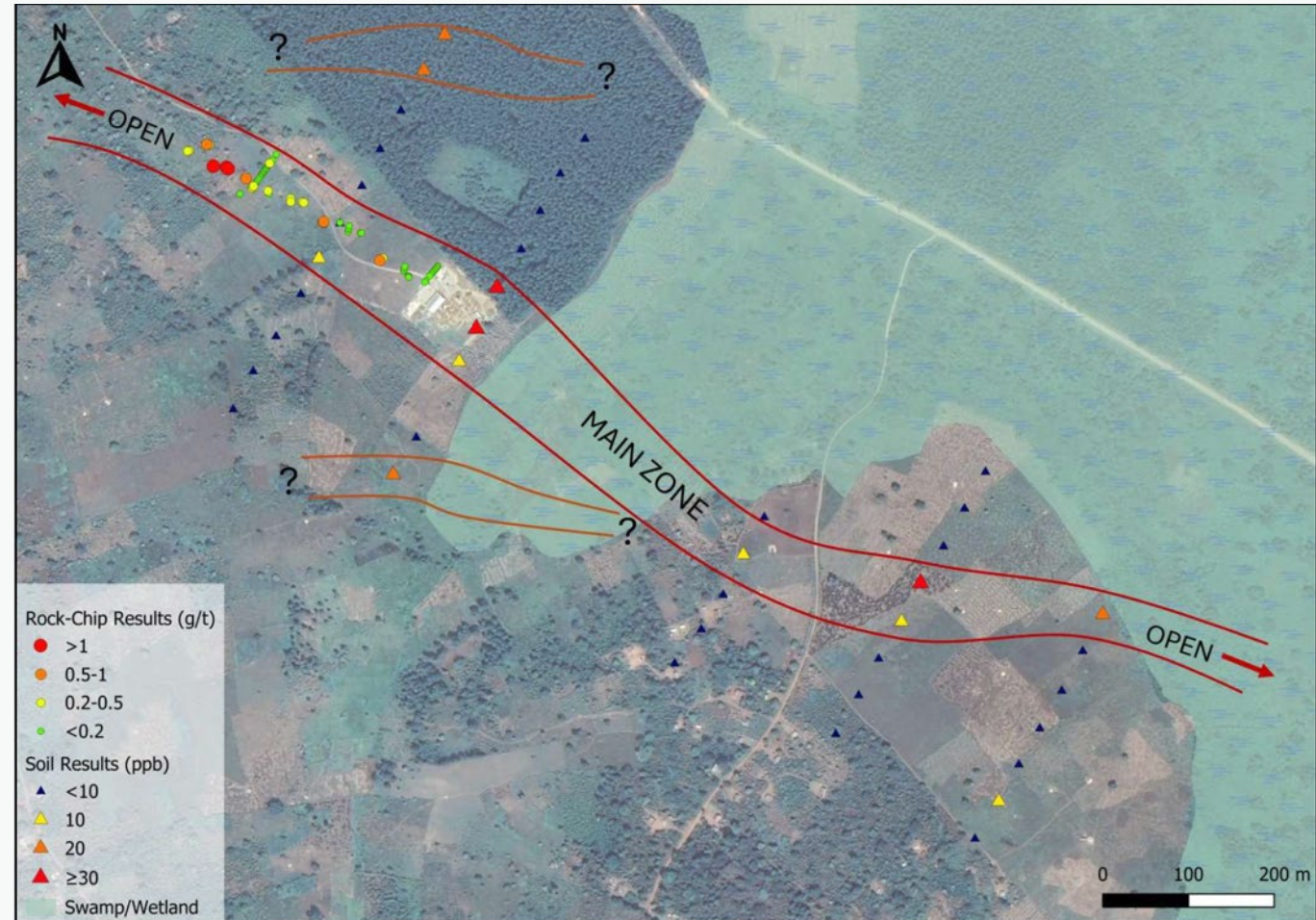
## Numerous high grade rock chip samples returned

- A total of 40 soil samples and 77 rock-chip samples were taken on the Bukuya target within the Mubende Gold Project as part of the first phase of field activities.
- Numerous high grade rock chip samples were returned including 29.1g/t Au, 9.2g/t Au and 3.1g/t Au.
- Soil sampling has confirmed gold mineralisation extends beyond current artisanal workings and has defined an anomalous zone across a strike of approximately 1,200m which remains open along strike in both directions.
- Field activities have now commenced across the full license area.

*Annotated map showing the soil and rock-chip sample results obtained from the Bukuya target. Soil samples show a continuation of a gold-in-soil anomaly for over 1.2km within the "main zone" as illustrated.*

*Two potential parallel zones are illustrated in orange and warrant follow up work and infill soil sampling.*

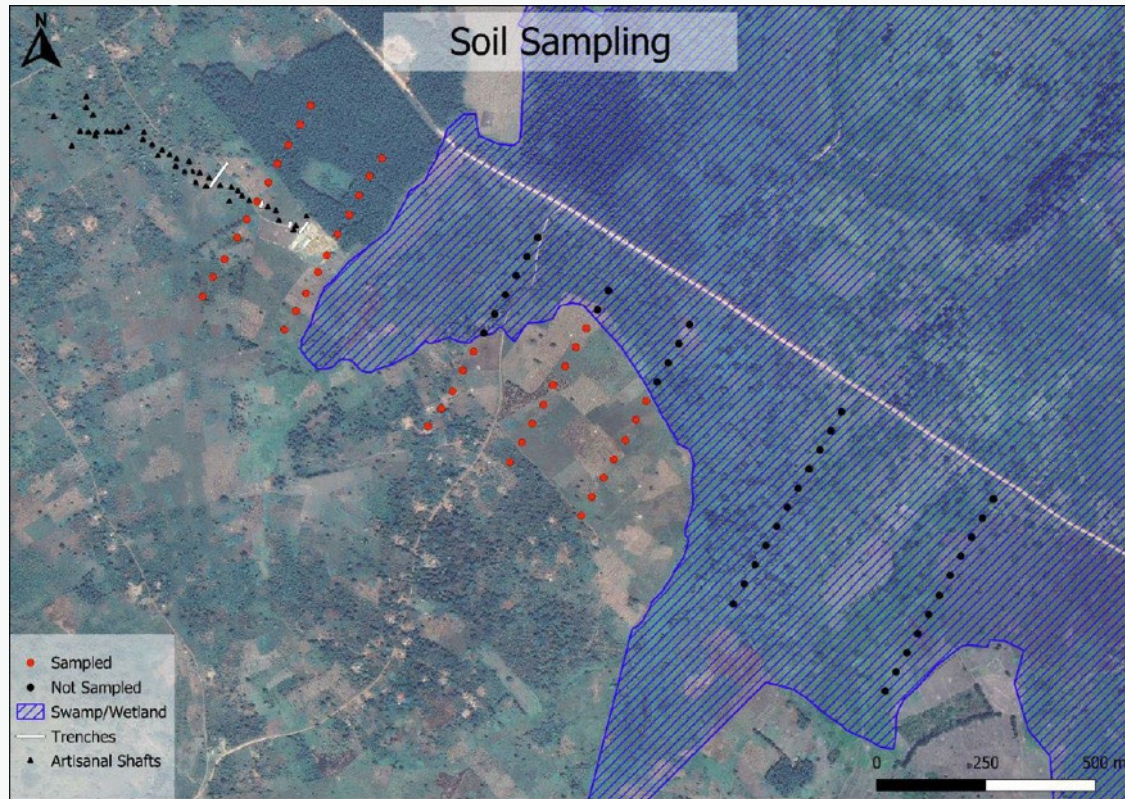
*Refer to ASX Announcement: Exploration Update - Mubende Gold Project, Uganda, 13 September 2024 for a table of the full soil and rock-chip sample results.*



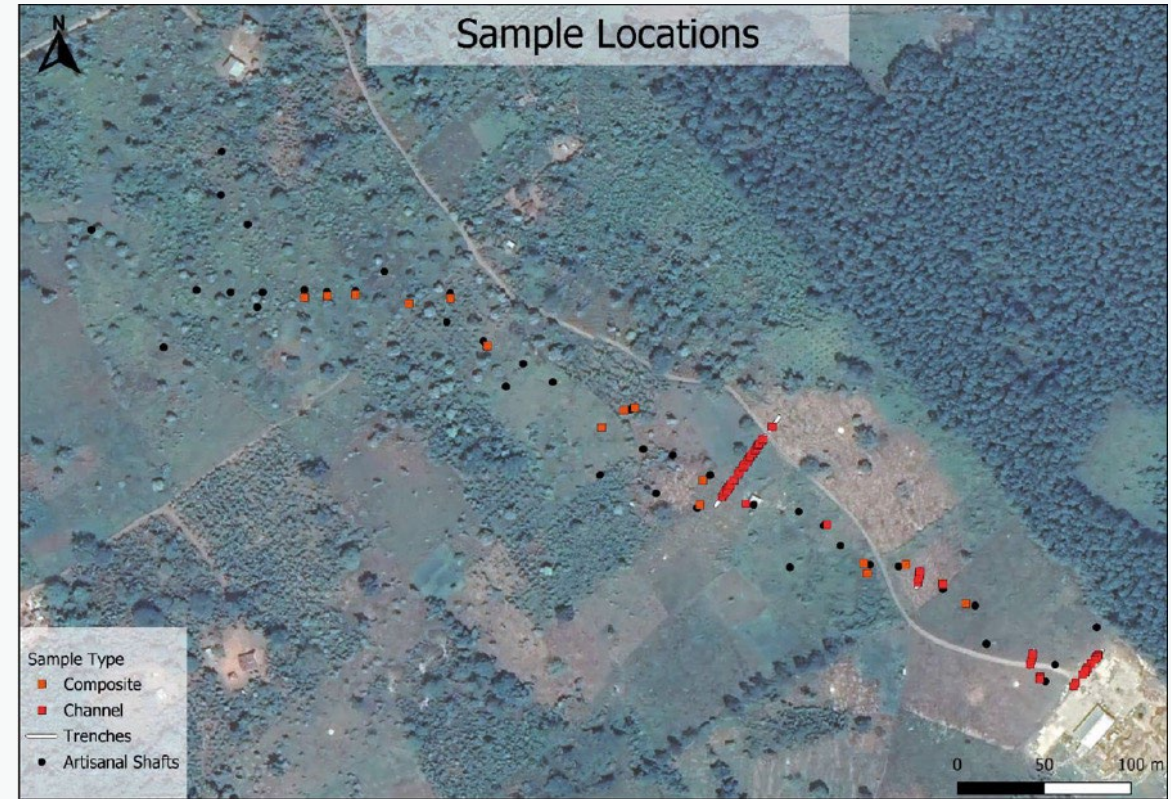


# Soil & Rock Chip Sampling

## Numerous high grade rock chip samples returned



Map showing the locations of the soil samples taken across the Bukuya target. Several sampling lines could not be completed due to the marshland.

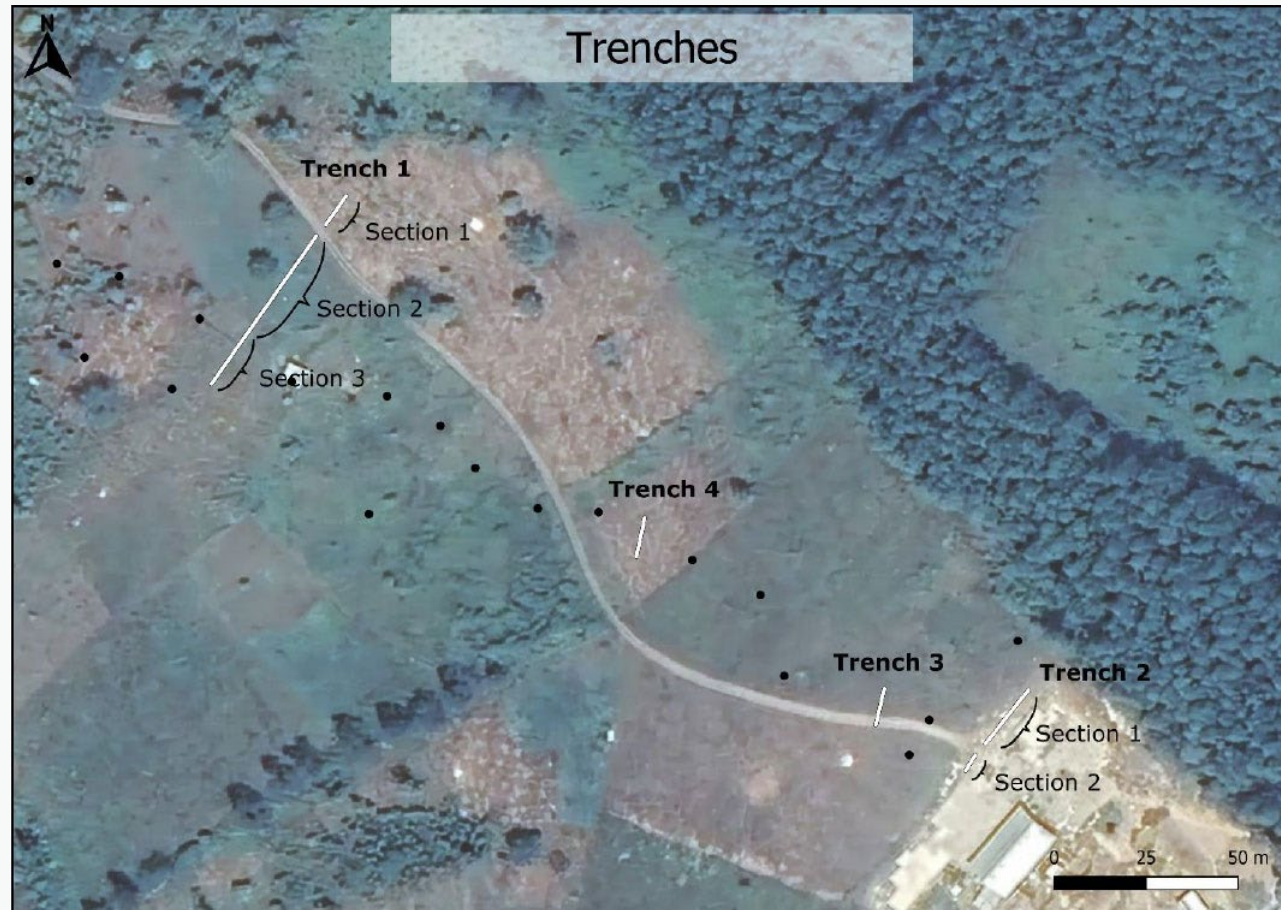


Map showing the rock chip grab and channel samples taken across the Bukuya target

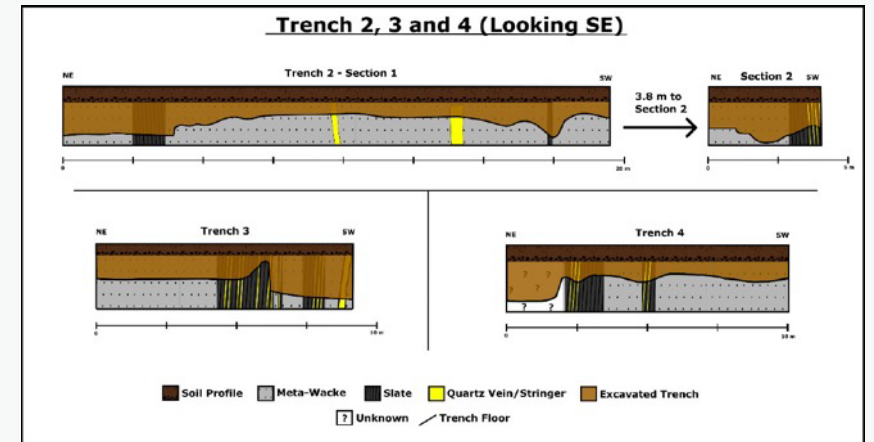
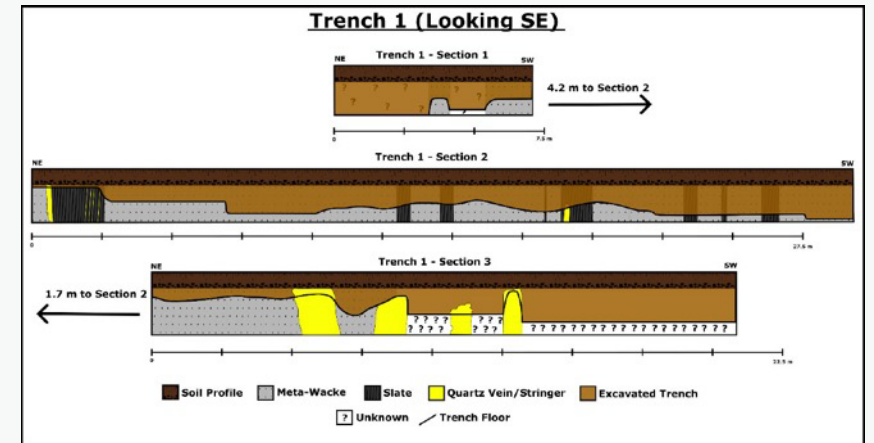


# Trenches

## Location of Trenches & Cross Sections



Map showing the location of trenches. Most trenches were done across zones of known mineralisation adjacent to existing artisanal shafts.



Cross-section of trench 1, 2, 3 and 4.





# Summary

## Significant potential in largely unexplored territory



Uganda has the potential to be a major gold producer, with initial aerial surveys by the Ugandan government confirming significant gold potential<sup>1</sup>.



E-Metals is currently undertaking more field work activities with a maiden drilling program expected in December 2024.



E-Metals will leverage its highly experienced in-country technical team with a successful track record of mineral exploration and development in Africa.



The prospectivity of the Bukuya is target confirmed by the presence of artisanal mining activities & visible gold samples taken from a recent field visit.



# Australian Gold Projects

APPENDIX



Meka



Salmon Gums

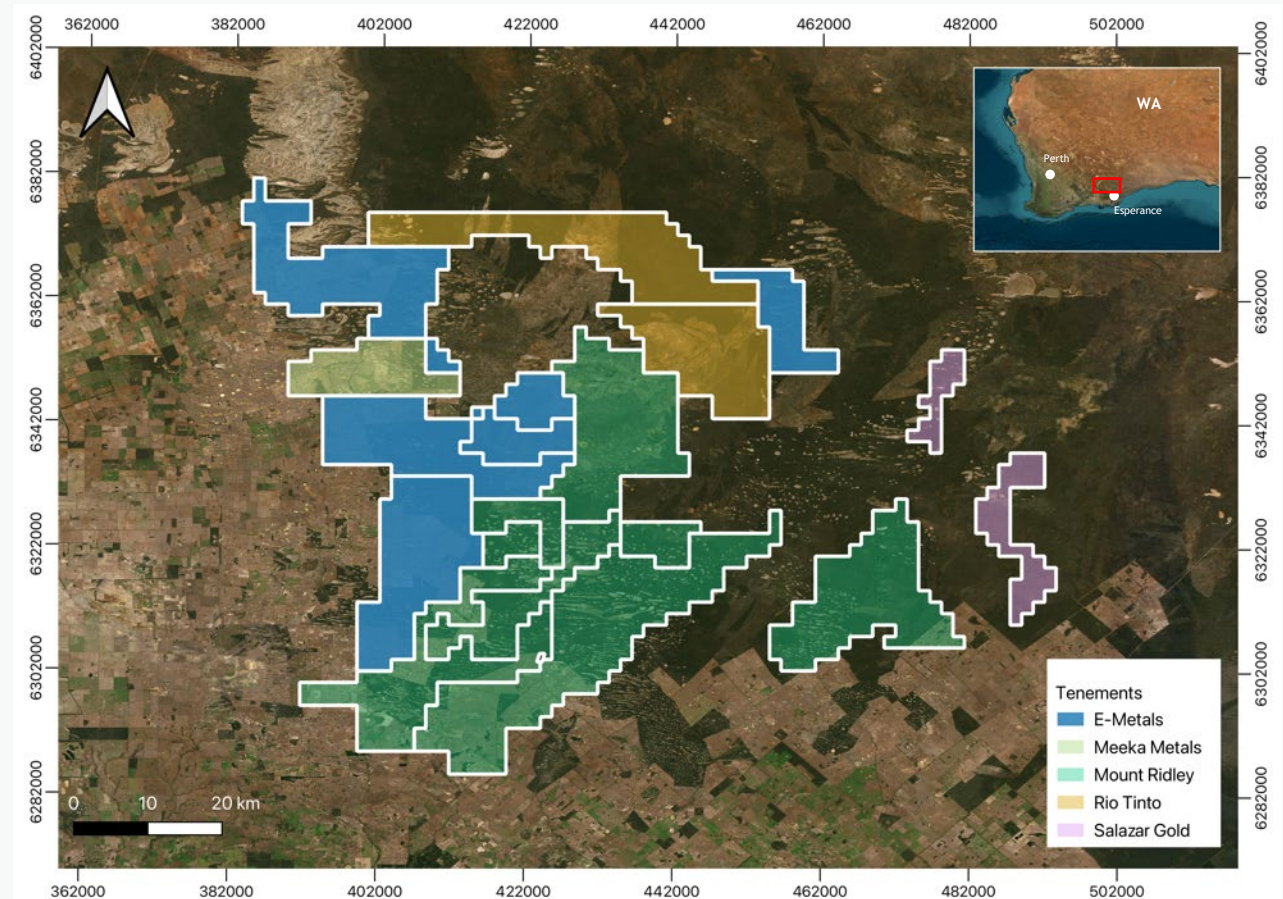




# Salmon Gums Project

## Exploration Licenses (E63/2049, E63/2066, E63/2126, E63/2127), Applications E63/2477, E63/2478, E63/2479)

- An area of 436 blocks of the Eucla Basin in the Albany Fraser Range Province of southern Western Australia (Salmon Gums Project) considered prospective for gold & rare earths elements.
- The Project cover areas underlain by meta-granites of Archaean to Proterozoic age. These granitic rocks are situated within the Albany Fraser Orogen on the south and southeastern margins of the Yilgarn Craton.
- Outcrop of the meta-granites within the Project is rare with majority of the tenements overlain by Cainozoic sediments, aeolian sands & salt lakes.
- The company is conducting a regional review of the prospectivity of the tenement package & the possibility of a further reconnaissance & mapping program.

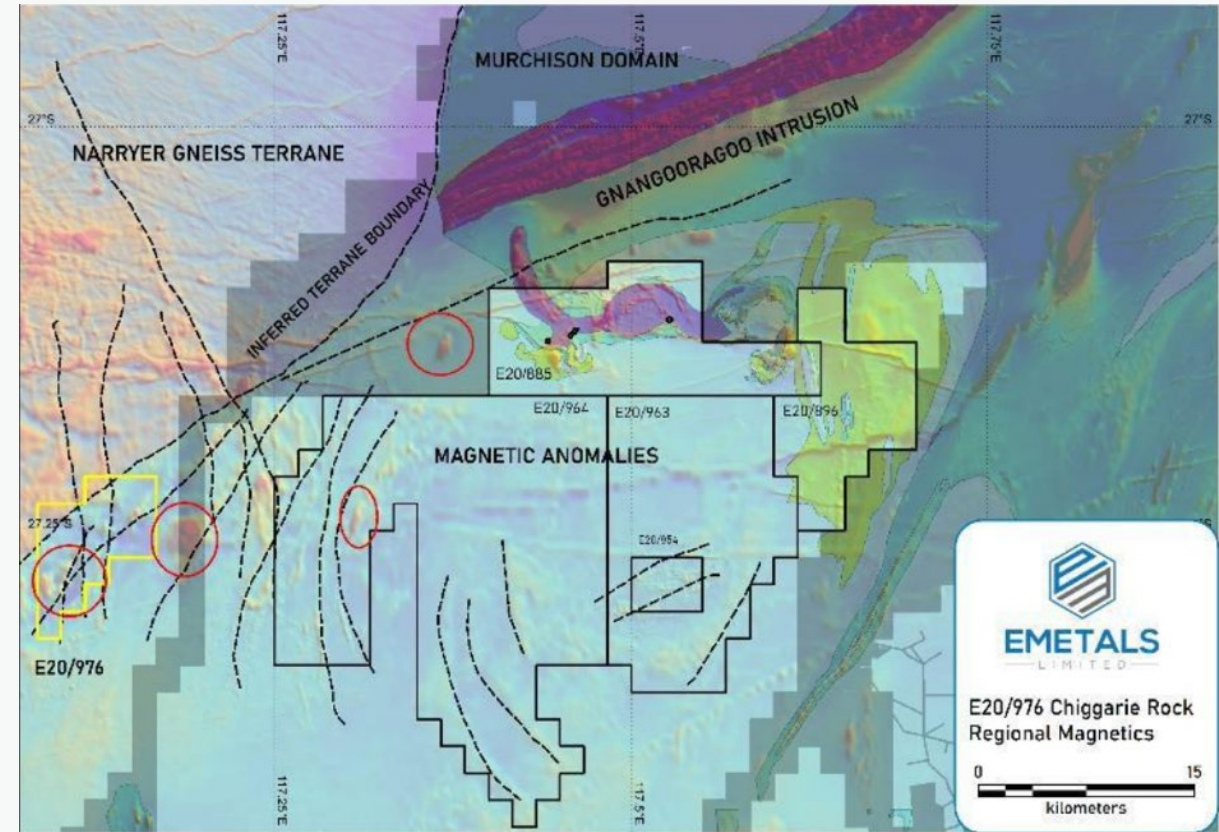




# Meka Project

## Exploration License (E20/976)

- The Meka Project is an unexplored magnetic anomaly located in the Murchison Region, approximately 110 kilometres west of Cue.
- A number of magnetic anomalies lies directly along strike from the Gnangooragoo Complex on the interpreted terrane boundary between the Murchison Domain and the Narryer Terrane and comprises a series of prominent magnetic features composed of both positive and negative amplitude magnetic anomalies.
- A number of these magnetic anomalies are present within proximity to the interpreted terrane boundary and represent exploration opportunities untested to date.
- An initial auger geochemical program has been designed & will initially target a number of geophysical anomalies defined by the airborne survey completed in 2023.
- Field activities scheduled to commence in the December quarter.



*E20/976 Interpreted Regional Setting on the terrane boundary*



**EMETALS**  
— LIMITED —

## CONTACT DETAILS

Mathew Walker  
Director

Email:  
[info@emetalslimited.com.au](mailto:info@emetalslimited.com.au)

[emetalslimited.com.au](http://emetalslimited.com.au)

